



# Web HMI 2.1 from GE Digital

## Enable smart operators with model-based, high-performance HMI—anywhere, anytime

Web HMI from GE Digital provides a single high-performance HMI across multiple data sources to improve situational awareness and enable operators for faster response. Working with iFIX, CIMPLICITY, and Historian from GE Digital, Web HMI modernizes visualization, driving the right operator actions with just a glance.

In addition to improving visualization, Web HMI eases development, deployment, and maintenance. This model-based software moves you toward auto-generating your HMI runtime application. Leveraging HTML5 technology and centralized management, the true native Web clients provide anywhere, anytime access and do not require any client installation.

Are you supporting today's changing workforce with high-performance HMI? Modernize your visualization with Web HMI and speed response.

### Outcomes

- Increase operator confidence, situational awareness, and decision support to reduce errors and downtime
- Modernize visualization based on high-performance standards and context-driven navigation
- Achieve visualization where and when you need it with native responsive web design
- Speed response with organized “cards” for an intuitive user experience for control and remote monitoring
- Accelerate development with a structured asset model
- Decrease deployment and maintenance costs with centralized management, web clients, and high-performance layouts and templates
- Reduce screen navigation time and speed alarm resolution based on high-performance HMI research

## 01 Speed response up to 40% with HMI layouts and context-driven navigation that improve awareness

Designed to high-performance HMI guidelines, Web HMI changes the visualization experience to enable decision support. The overall layout provides operators with the most informed view of problems and tasks at hand. Each window offers a different perspective or view on the displayed asset, interchangeable for a personalized experience. Operators see asset-related data automatically based upon the model, speeding awareness and response.

## 02 Support operators with high-performance visualization and control at the right place

Web HMI provides visualization where you need it with native responsive web design. The HTML5 user interface is native Web out-of-the-box, supports the responsive design concepts, and adapts to various form factors and orientations. From the control room to field locations, Web HMI draws operator attention to the right information at the right time.

## 03 Reduce development up to 40% with an asset model and HMI templates

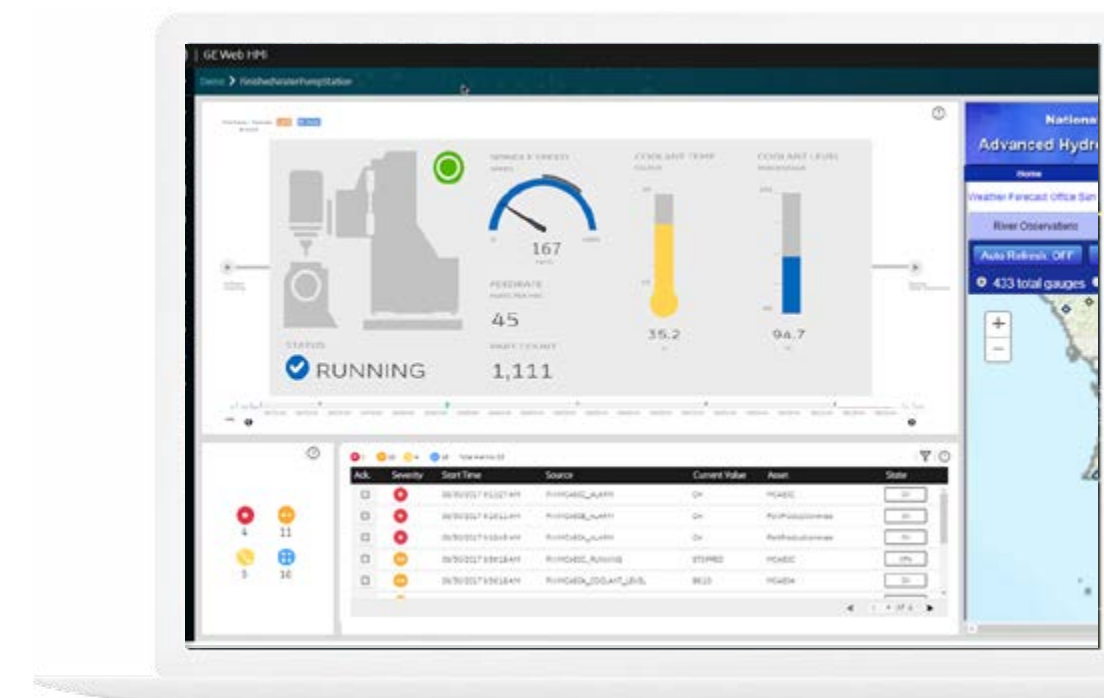
With Web HMI, you never start with a blank paper. Instead, you'll define your structured asset model, then map to the SCADA database. Save time by defining assets once for each class. Pre-defined objects and templates are high performance, out-of-the-box. Cards—or a model-driven window view—include HMI, alarms, alarm summary, trends, and control and may be customized.

## 04 Save time with zero deployment clients and centralized management

Leveraging HTML5 technology, Web HMI reduces deployment and maintenance time. The true native Web clients do not require any client installation. Deploying and maintaining has never been easier.

## 05 Enable the digital twin with data, visualization, and control

Web HMI provides a foundation for your digital industrial journey by connecting your assets and creating a digital mimic—or twin—of a process, network, or piece of equipment. Operators can visualize and identify key information, then take the right actions.



*"I would absolutely recommend this new software to other SCADA users. It's very easy to figure out, helps with our jobs, and makes the operators more efficient."*

**Haley Parker, Control Systems Technician**  
City of San Luis Obispo



# Web HMI 2.1 from GE Digital

Enable smart operators with model-based, high-performance HMI—anywhere, anytime

## Features

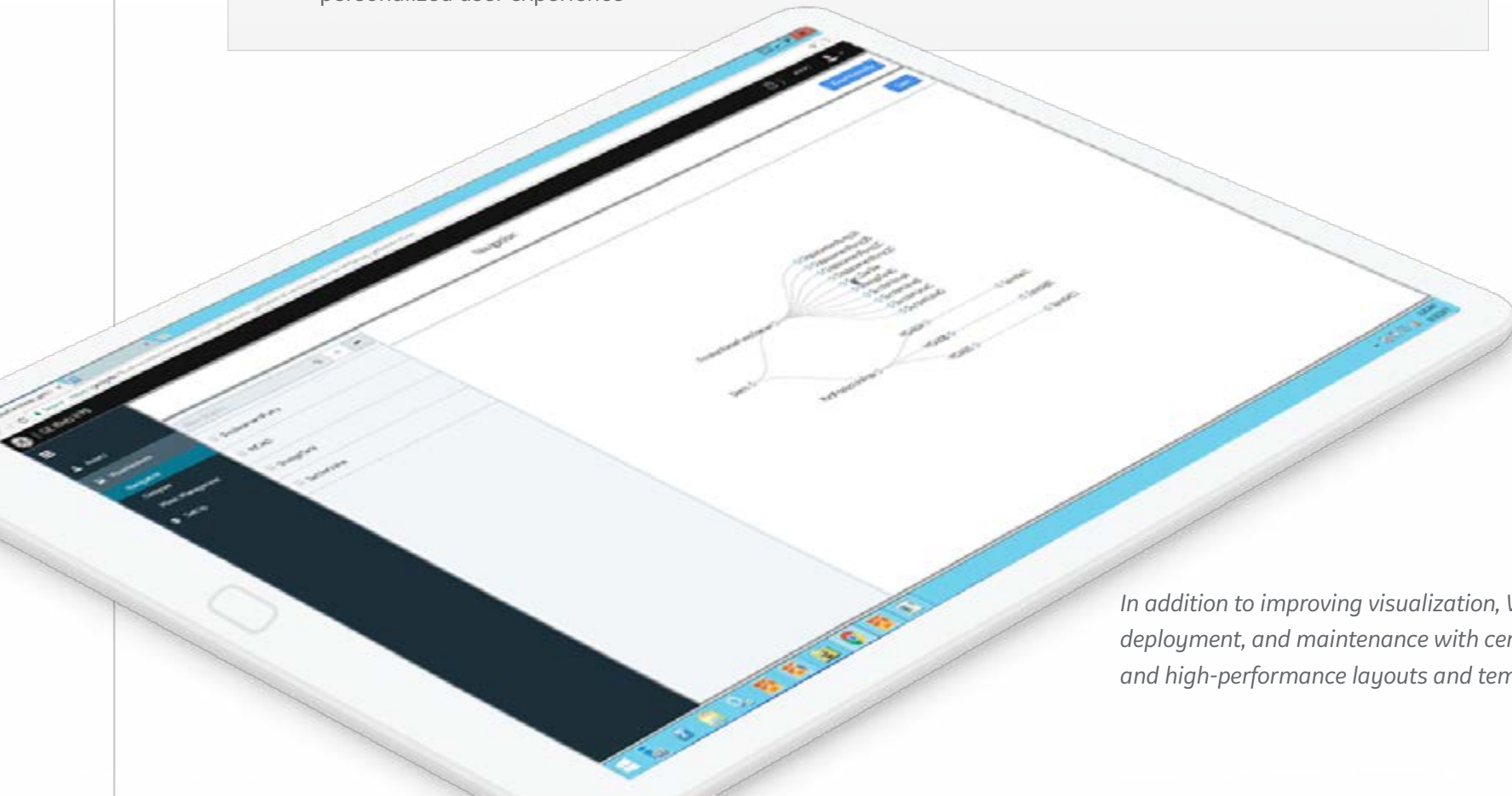
- Version 2.1: Array support, control attributes, duplicate asset, mimic override, control card enhancements, enhanced client, scalability, inline data entry, runtime navigation
- Never start with a blank sheet of paper; reduce development with a model and templates
- Native Web HMI and context-driven, high-performance visualization
- Structured asset model that leverages industry standards and maps to the SCADA database
- High performance HMI out-of-the-box: asset types, dynamos/smart objects, layouts, and cards (HMI, alarms, trends, control), navigation
- Extensible via layout, cards, and whitelisting. Single click to re-arrange pre-defined layouts for a personalized user experience
- Auto-generated control card via asset model
- Centralized development and deployment
- Base API to consume external HTML5 content
- Model builder with easy drag-and-drop and visual structuring capabilities
- Mimic creation via existing native editors in iFIX and CIMPLICITY
- Multi-touch alarm and trend viewer
- Kiosk mode to run only one application at a time and restrict access
- Encrypted communication from your Web client using SSL/digital certificate, IT security friendly, and cloud ready

## Software requirements

- **Thin Clients:** Safari 9.1 or greater on the iPad (runtime only), Google Chrome 51 or greater, Microsoft Internet Explorer 11.0.9600.18697 or greater
- **Mobile Operating Systems:** iPad Tablet: iOS 9.0, Android: version 6.0 or greater
- **Web Servers**
  - Microsoft Windows Server 2016 Standard, 2012 R2 Standard, 2008 R2 Standard SP1, 2008 R2 Enterprise SP1
  - Microsoft Windows 10 (64-bit only), Windows 7 SP1 (64-bit only)

## Hardware requirements

- **Mobile Devices**
  - Android Tablet: Minimum Dual Core 1.7 GHz, 1 GB RAM
  - iPad Tablet: Third generation or greater
- **Client Specifications**
  - 2.0 GHz Intel® Core™2 Duo Processor
  - 4 GB RAM
- **Server Specifications**
  - Core i7: 4 Core Processor
  - 16 GB RAM (recommended)



Increase situational awareness to reduce operator errors and downtime with modern visualization based on high-performance standards and context-driven navigation.

[LEARN MORE](#)

*In addition to improving visualization, Web HMI eases development, deployment, and maintenance with centralized management, web clients, and high-performance layouts and templates.*





# Web HMI 2.1 from GE Digital

## Enable smart operators with model-based, high-performance HMI—anywhere, anytime

### Services

In the world of Industrial Internet of Things (IIoT), organizations are able to optimize productivity, reduce costs, and achieve operational excellence. While this is an exciting time for opportunity and growth, it can also bring on new challenges, questions, and uncertainty. No matter where you are on your IIoT journey, GE Digital has the right services offering for you.

**Advisory Services** We can help you plan and start your IIoT journey in a way that aligns to your specific business outcomes.

**Managed Services** We can help you maintain your critical machines from one of our remote locations around the world using model-based predictive-analytic technology.

**Implementation Services** Our team will help develop a collaborative, multi-generational plan that will marry your existing investments to the right process enhancements and technology.

**Education Services** We specialize in education services to ensure that you're leveraging our solutions to the fullest extent with our training and certificate programs.

**Acceleration Plans** Let us help by ensuring that your business continues to operate at its highest efficiency, all while mitigating risks to your investments.

**Cyber Security Services** Our solutions provide industrial-grade security for a wide range of OT network and application topologies.

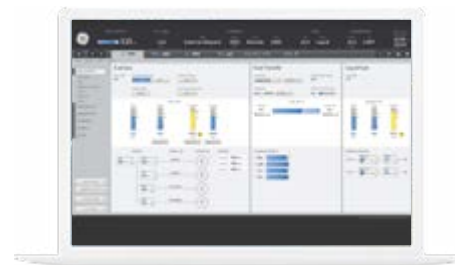
### Related products

GE Digital's [HMI and SCADA suite](#) helps you precisely monitor, control, and visualize every aspect of your operations, enabling operators to make the best decisions faster.



#### [iFIX](#) →

Gain visibility into your operations and secure agility for smarter decision making that drives results



#### [CIMPLICITY](#) →

Drive real-time visibility for smart operators with true client-server-based visualization and control



#### [Workflow](#) →

Guide operators with dynamic, interactive electronic work instructions and eSOPs for more consistent operations and optimized processes

### Continue your IIoT journey

Transforming your business requires innovative foundational solutions that lay the groundwork for optimized performance.



#### [Cyber Security for OT](#) →

Take the right actions to increase resilience, help ensure safety, and maintain availability across your operational technology (OT)



#### [Historian](#) →

Optimize asset and plant performance through time-series industrial data collection and aggregation



#### [Plant Applications](#) →

Maximize overall equipment effectiveness (OEE), improve production scheduling, and ensure product quality

#### [Predix](#) →

Innovate and transform your business with the cloud-based platform for the Industrial Internet, purpose-built for industry

# PREDIX

#### About GE

GE (NYSE: GE) is the world's Digital Industrial Company, transforming industry with software-defined machines and solutions that are connected, responsive and predictive. GE is organized around a global exchange of knowledge, the "GE Store," through which each business shares and accesses the same technology, markets, structure and intellect. Each invention further fuels innovation and application across our industrial sectors. With people, services, technology and scale, GE delivers better outcomes for customers by speaking the language of industry.

#### Contact

Americas: 1-855-YOUR1GE (1-855-968-7143)  
gedigital@ge.com  
[www.ge.com/digital](http://www.ge.com/digital)